

# Stars on the Water

## May 2010

### Part IV - Stars 7 & 8

The stars for this pattern are paper pieced. Fabric measurements are given for pieces in each star.

If you have not paper pieced the following sites give instructions for paper piecing.

<http://www.daystyledesigns.com/paperpiecing.htm>

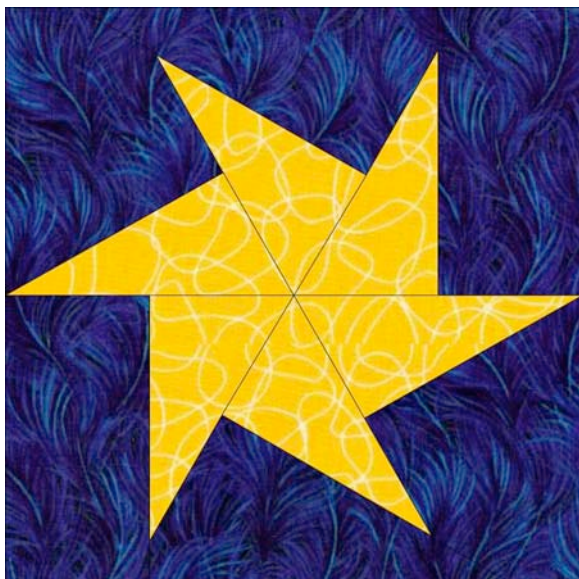
<http://quilterscache.com/StartQuiltingPages/startquiltingthree.html>

### Cutting Instructions: Background Fabric

The background pieces for this month's stars. (Background pieces for all 13 stars were listed in last month's instructions)

6 ray star	Block 7	2	background	2	3 1/2	3 1/2
6 ray star	Block 7	2	background	4	2	4 1/2
6 ray star	Block 7	2	background	6	2 1/4	4
Folded Star	Block 8	4	background	1	4	3 3/4
Folded Star	Block 8	4	background	4	3 1/2	2

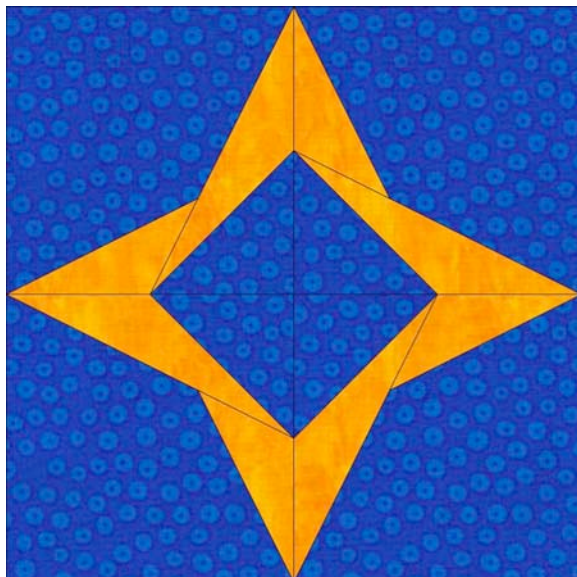
## Block 7– 6 Ray Star



	<u>block #</u>	<u># pieces</u> <u>to cut</u>	<u>Colors</u>	<u>piece #</u> <u>on</u> <u>pattern</u>	<u>width</u>	<u>length</u>
6 ray star	Block 7	2	color	1	4	2
6 ray star	Block 7	2	color	3	4	2
6 ray star	Block 7	2	color	5	4	2

Print 2 copies of each template at 100%. In addition to the background fabric listed above you will need:

## Block 7 – Folded Star

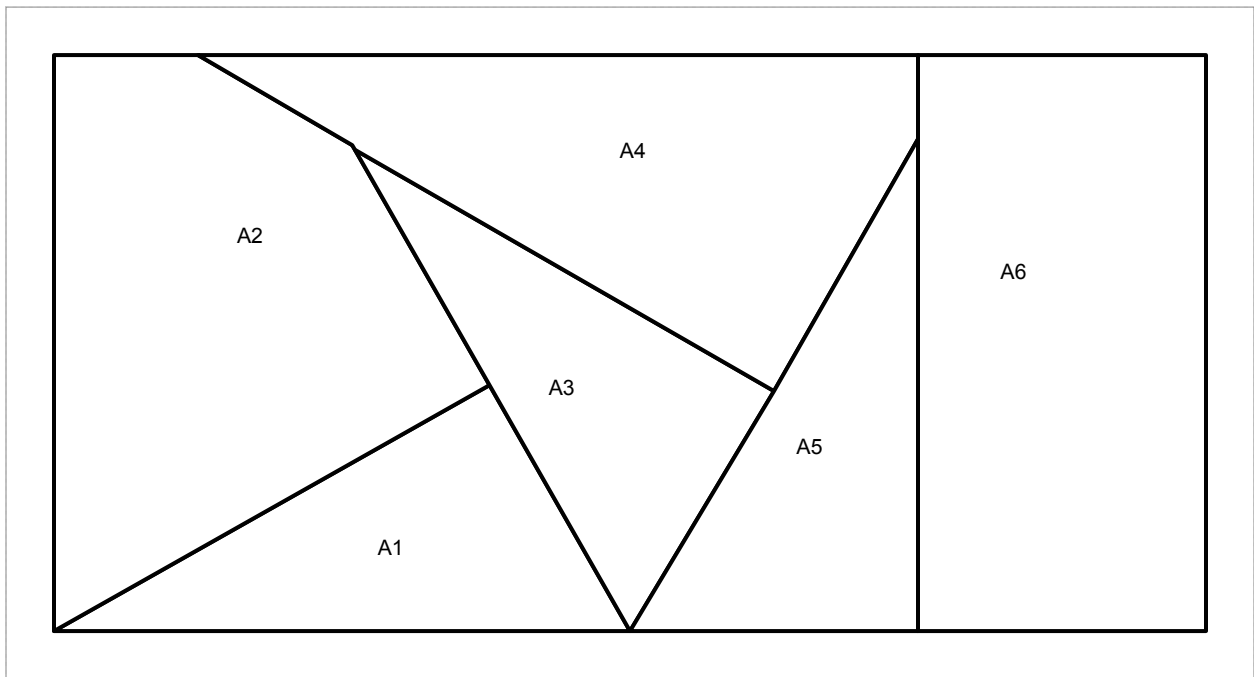


	<u>block #</u>	<u># pieces</u> <u>to cut</u>	<u>Colors</u>	<u>piece #</u> <u>on</u> <u>pattern</u>	<u>width</u>	<u>length</u>
Folded Star	Block 8	4	color 1	2	3 1/4	1 1/2
Folded Star	Block 8	4	color 2	3	4 1/2	1 1/4

Print 1 copy of the template at 100%. In addition to the background fabric listed above you will need:

\*\*\* To make placement easier, I take a colored marker and draw a line  $\frac{1}{4}$  inch from the seam line. The first drawn line would be in section 2. That way I know where to place the first piece and line up the second piece (light) for a  $\frac{1}{4}$  inch seam. Pin or use spray adhesive or a dab of fabric glue so the piece doesn't slip while you are moving or sewing.

# 6 Ray Star



# Folded Star

